

Malawi

| High HIV burden |

Tuberculosis profile

Population 2013

16 million

Estimates of TB burden * 2013	Number (thousands)	Rate (per 100 000 population)
Mortality (excludes HIV+TB)	1.5 (0.51–2.5)	9.3 (3.1–16)
Mortality (HIV+TB only)	3.4 (2–5.1)	21 (12–31)
Prevalence (includes HIV+TB)	22 (11–37)	135 (67–226)
Incidence (includes HIV+TB)	26 (25–28)	156 (152–168)
Incidence (HIV+TB only)	15 (9.5–20)	92 (58–125)
Case detection, all forms (%)	70 (65–71)	

Estimates of MDR-TB burden * 2013	New	Retreatment
% of TB cases with MDR-TB	0.4 (0.1–1)	4.8 (3.2–6.9)
MDR-TB cases among notified pulmonary TB cases	51 (13–130)	110 (72–160)

TB case notifications 2013	New **	Relapse
Pulmonary, bacteriologically confirmed	6 817	669
Pulmonary, clinically diagnosed	5 985	
Extrapulmonary	4 308	

Total new and relapse	17 779
Previously treated, excluding relapses	1 580
Total cases notified	19 359

Among 17 779 new and relapse cases:
1 827 (10%) cases aged under 15 years; male:female ratio: 1.2

Reported cases of RR-/MDR-TB 2013	New	Retreatment	Total **
Cases tested for RR-/MDR-TB	100 (1%)	459 (20%)	884
Laboratory-confirmed RR-/MDR-TB cases			91
Patients started on MDR-TB treatment			21

TB/HIV 2013	Number	(%)
TB patients with known HIV status	17 820	(92)
HIV-positive TB patients	9 998	(56)
HIV-positive TB patients on co-trimoxazole preventive therapy (CPT)	8 979	(90)
HIV-positive TB patients on antiretroviral therapy (ART)	8 777	(88)
HIV-positive people screened for TB	458 972	
HIV-positive people provided with IPT	99 728	

Treatment success rate	(%)
New and relapse cases registered in 2012	82
Previously treated cases, excluding relapse, registered in 2012	57
HIV-positive TB cases, all types, registered in 2012	
RR-/MDR-TB cases started on second-line treatment in 2011	69
XDR-TB cases started on second-line treatment in 2011	

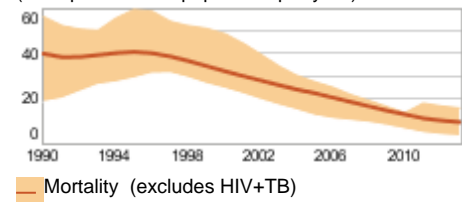
Laboratories 2013	
Smear (per 100 000 population)	1.5
Culture (per 5 million population)	1.5
Drug susceptibility testing (per 5 million population)	1.2
Sites performing Xpert MTB/RIF	33
Is second-line drug susceptibility testing available?	No

Financing TB control 2014	
National TB programme budget (US\$ millions)	5.7
% Funded domestically	50%
% Funded internationally	50%
% Unfunded	0%

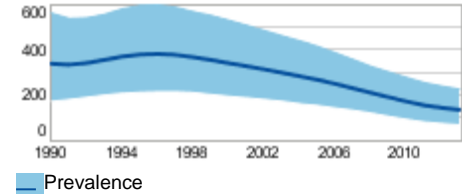
* Ranges represent uncertainty intervals

** Includes cases with unknown previous TB treatment history

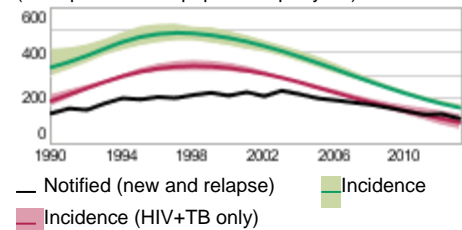
(Rate per 100 000 population per year)



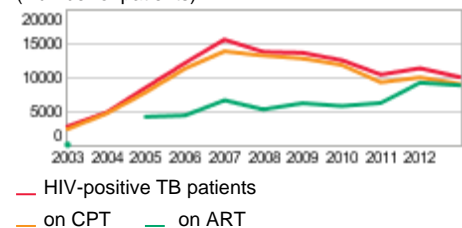
(Rate per 100 000 population)



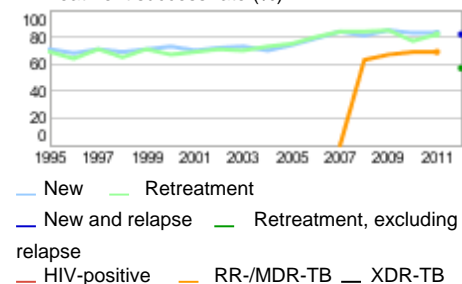
(Rate per 100 000 population per year)



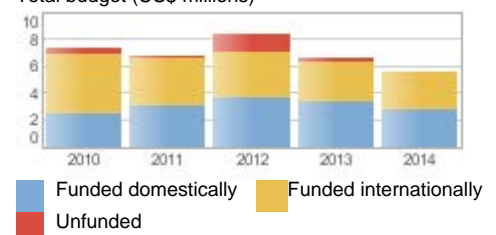
(Number of patients)



Treatment success rate (%)



Total budget (US\$ millions)



Data are as reported to WHO. Estimates of TB and MDR-TB burden are produced by WHO in consultation with countries.

Generated: 2015-05-13

Data: www.who.int/tb/data